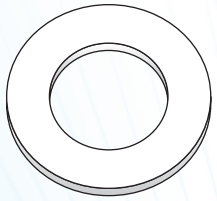
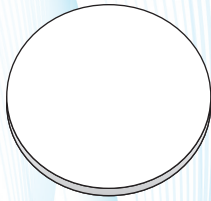


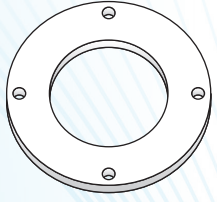
TECHNICAL BULLETIN: TEK SPACERS



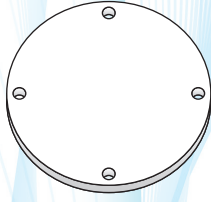
STANDARD RING



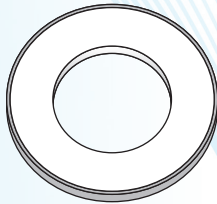
BLIND RING



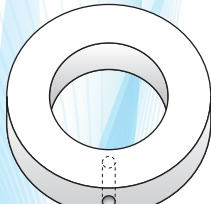
STANDARD FULL FACE



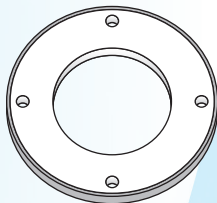
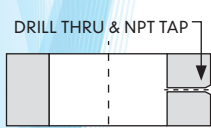
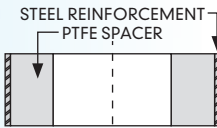
BLIND FULL FACE



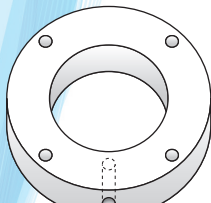
ARMORED RING



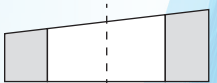
ORIFICE RING



ARMORED FULL FACE



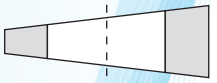
ORIFICE FULL FACE



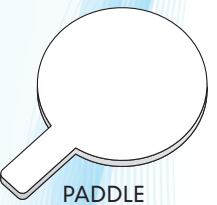
SINGLE TAPER



TAPER BORE



DOUBLE TAPER



PADDLE

CD = Cross Direction
The data we are herewith providing are all based on laboratory testing and are proposed to technical designers as possible and useful advice. Deviations from the values indicated may occur, but they do not constitute themselves either detriment of quality or reason for rejection.

Through the use of specialized, state-of-the-art machinery and software, IPM-TEK manufactures a complete line of PTFE spacers. Our TEK SPACERS line of over 140 standard, preprogrammed profiles, meet or exceed the quality expected from the gasket and sealing industry. Sizes range from 1/4" to 48" (6 mm to 1,220 mm). Call and order the TEK SPACERS you need, today.

The TEK SPACERS line of products includes the following:

- Standard Ring Spacers
- Blind Ring Spacers
- Armored Ring Spacers
- Orifice Ring Spacers
- Single Taper Spacers
- Taper Bore Spacers
- Paddle Spacers
- Standard Full Face Spacers
- Blind Full Face Spacers
- Armored Full Face Spacers
- Orifice Full Face Spacers
- Double Taper Spacers
- Flanges

Custom sizes and configurations are also available.

PTFE G400 (Virgin PTFE)			
Properties	Unit	Method	Typical Value
PHYSICAL - MECHANICAL			
Density	g/cm ³	ASTM D792	2.14 - 2.18
Hardness - Shore D	points	ASTM D2240	51 - 60
Tensile strength - CD	MPa	ISO 527	≥ 20
Elongation at break - CD	%	ISO 527	>200
Compressive strength at 1% deformation - CD	psi	ASTM D695	580 - 725
Deformation under load at room temperature after 24 hours at 13.7 N/mm ² - CD	%	ASTM D621	14 - 17
Permanent deformation as above after 24 hours of rest at room temperature - CD	%	ASTM D621	7 - 8
Deformation under load at 260°C, after 24 hours at 41 N/mm ² - CD	%	ASTM D621	
Permanent deformation as above after 24 hours of rest at room temperature - CD	%	ASTM D621	7 - 8
Impact strength Izod	J/m	ASTM D256	153
TRIBIOLOGICAL			
Dynamic coefficient of friction	/	ASTM D1894 ASTM D3702	0.06
Wear factor K	/	ASTM D3702	2.900
PV limit	N/mm ² • m/min	/	2.4 4.2 5.7
THERMAL			
Service Temperature (min - max)	°F	/	-328 / +500
Thermal expansion coefficient (linear) 25 - 100°C	10 ⁻⁵ in/in/°F	ASTM D696	6.625 - 7.206
ELECTRICAL			
Dielectric strength (specimen 0.5 mm thick)	KV/mm	ASTM D149	≥ 40
Dielectric Constant at 60 Hz and 106 Hz	/	ASTM D150	2.05 - 2.10
Volume Resistivity	Ω • cm	ASTM D257	10 ¹⁸
Surface Resistivity	Ω	ASTM D257	10 ¹⁷

2352 N. Lobdell Avenue
Baton Rouge, LA 70806
Office: 225-928-0114
Fax: 225-218-4272
sales@ipmtek.com

IPM TEK
Industrial Plastics and Machine TEK, LLC
THE AMERICAN PTFE MANUFACTURER